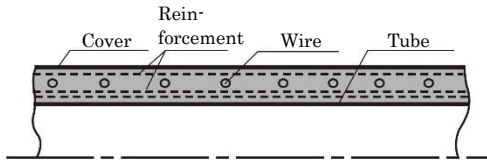


# SUCTION AND DELIVERY HOSE

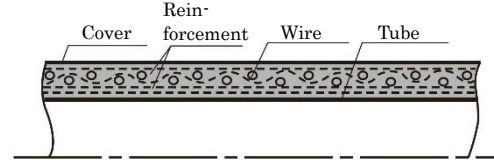
(used for positive or negative pressure)

## <Construction of hose>

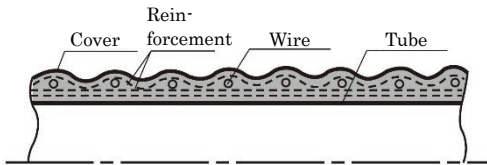
**1W<sub>sm</sub>** Single wire / Smooth and texture type



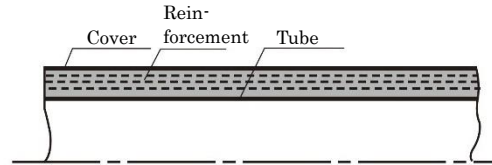
**2W<sub>sm</sub>** Double wire / Smooth and texture type



**1W<sub>CR</sub>** Single wire / Bellows and texture type



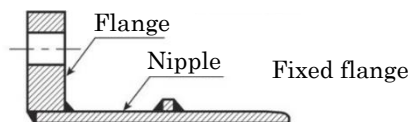
**0W<sub>sm</sub>** Wireless / Smooth and texture type



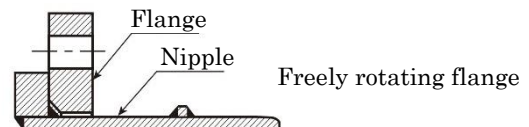
※Wireless type is used only for delivery. The product size is limited by nominal size and pressure. Contact TOGAWA RUBBER if you have any request.

## <Coupling>

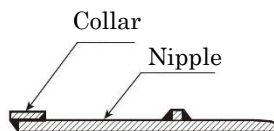
**A** Flange type



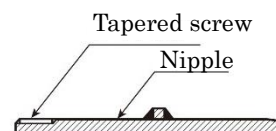
**B** Loose flange type



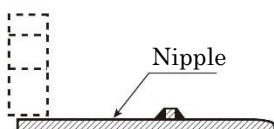
**C** Shoulder type



**D** Screw type



**E** Gas pipe type



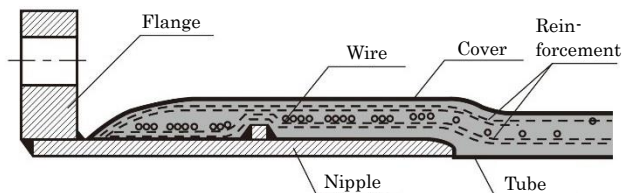
※Coupling made of SUS, also can be manufactured by other materials.

## <Hose end>

### ●Hose with coupling

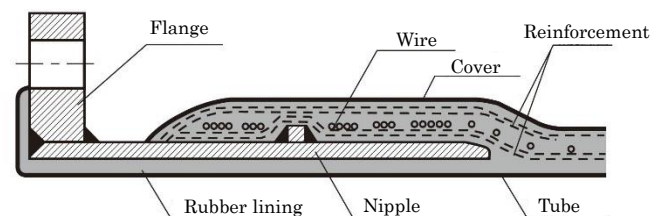
#### BL Bandless type

The nipple of the coupling and hose end are vulcanization-adhered together during hose manufacturing. It is tough and easy to pipe connecting.  
Ideal for use with transporting gases such as oil and air.



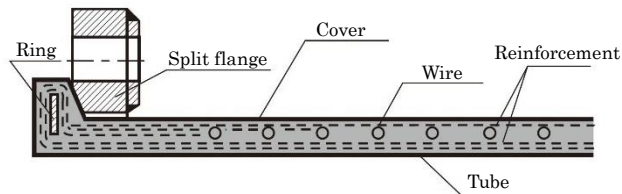
#### BLT Built-in type

Bandless type with a rubber lined to resist the nipple from abrasion and corrosion by liquid. Ideal for conveying powder or fluids such as acid and alkali.



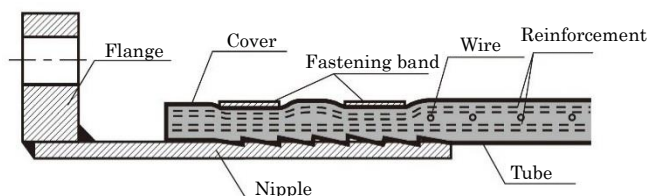
#### NPL Nippleless type

Since the hose end is firmly reinforced by the ring, a nipple is not required. Freely rotating split flange is easily connected to pipe.



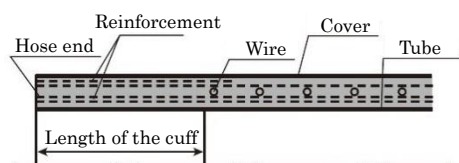
#### BH Band fastened type

Used for low pressure hose of general fluids or steam hose. According to application, special nipple and band are available.

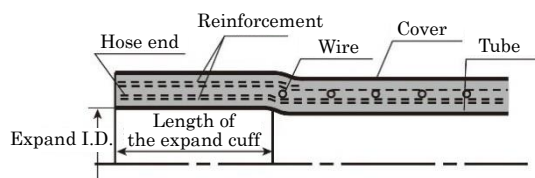


### ●Hose without coupling

#### ES Straight cuff



#### EL Expand cuff



※Please specify expand I.D. and length of the cuff to TOGAWA RUBBER.

※Acid resistant hose is manufactured having no reinforcement exposed at end of the hose.

## <Manufactured range>

Hose	Max Working Pressure (MPa)	Shape of the hose end			
		BL	BLT	NPL	BH
Air Water Abrasion resistant Chemical Oil resistant Strong acid	0.5	25 to 300	25 to 300	25 to 300	25 to 150
	1.0	25 to 300	25 to 300	25 to 300	25 to 75
	1.5	25 to 300	25 to 300	—	25 to 65
Oil resistant	2.0	25 to 300	25 to 300	—	—

※Strong acid hose is manufactured from  $\phi 25$  to  $\phi 200$ .

※The table indicates a manufactured range from min. size to max. size of the hose inner diameter. Some sizes can be manufactured 30m as a special length.

※Oil resistant hose is needed to change its hose end depending on the content of aroma component and ambient temperature of oils such as general hydraulic oil, black fuel oil, crude oil and lubricating oil. Contact TOGAWA RUBBER as needed.

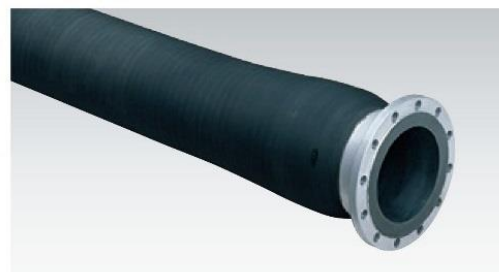
※BL type is recommended for using a hose frequently replaced or a hard packing.

## <Specifications>

● Standard size :  $\phi$  25 to  $\phi$  300

(Strong acid hose :  $\phi$  25 to  $\phi$  200)

※ In case of negative pressure used, recommended range of working pressure is up to -0.08MPa.



Hose	Air hose			Water hose		
Part No.	AIR-05	AIR-10	AIR-15	WAT-05	WAT-10	WAT-15
Max Working Pressure (MPa)	0.5	1.0	1.5	0.5	1.0	1.5
Fluid Temperature	-20℃ to +60℃			-20℃ to +60℃		
Ambient Temperature	-10℃ to +60℃			-10℃ to +60℃		
Fluids	Air etc.			Industrial water, Cooling water, etc.		

Hose	Abrasion resistant hose			Chemical hose		
Part No.	ABR-05	ABR-10	ABR-15	CHM-05	CHM-10	CHM-15
Max Working Pressure (MPa)	0.5	1.0	1.5	0.5	1.0	1.5
Fluid Temperature	-20℃ to +80℃			-20℃ to +40℃		
Ambient Temperature	-10℃ to +60℃			-10℃ to +60℃		
Fluids	Cement, Sediment, Iron ore, Grain, etc.			Chemical agent etc.		

Hose	Oil resistant hose				Strong acid hose		
Part No.	OIL-05	OIL-10	OIL-15	OIL-20	ACD-05	ACD-10	ACD-15
Max Working Pressure (MPa)	0.5	1.0	1.5	2.0	0.5	1.0	1.5
Fluid Temperature	-20℃ to +60℃				-20℃ to +40℃		
Ambient Temperature	-10℃ to +60℃				-10℃ to +50℃		
Fluids	Crude oil, Heavy oil Kerosene, etc.				Concentrated sulfuric acid, Concentrated hydrochloric acid, etc.		



TOGAWA RUBBER CO., LTD.

4-2-5 MINAMI-HORIE, NISHI-KU, OSAKA, 550-0015, JAPAN.

TEL: +81-6-6538-1261 FAX: +81-6-6531-3238

E-mail: eigyo@togawa.co.jp URL: <https://www.togawa.co.jp>

2024E-10h